

The Harlem Road United Methodist Church has a fresh produce giveaway. Produce is distributed on the 3rd Saturday of every month, except for June, which is on the 2nd Saturday. The dates are listed below:

- ★ May 21
- ★ June 11
- ★ July 16
- ★ August 20
- ★ September 17
- ★ October 15

For more information contact Mishelle Soule at bristol2425@yahoo.com.

Harlem Road United Methodist Church: 5520 Harlem Rd. Galena 43021



Local Food Pantries Sunbury, Ohio

Big Walnut Friends Who Share
565 West Cherry St. Unit 8
Sunbury, Ohio 43074
(740) 965-9596

www.bigwalnutfriendswhoshare.org

BWFWS is located at 565 West Cherry Street, Unit 8, Sunbury. To access, turn off State Route 37 onto Cheshire Road then immediately turn left onto the gravel drive (behind Voss Brothers) they are the second warehouse.

Open Hours:

Every Wednesday: 9-11:30 am
2nd & 4th Tuesday: 6:30-8 pm

Vineyard Church

1001 W. Cherry St.
Sunbury, Ohio 43074
(740) 965-8888

vcdfcfoodpantry@twc.com

(Located off of Route 37)

Open Hours:

Every 1st and 3rd Monday of each month.

(Free Medical Clinic is offered during this time. Call in advance to make an appointment.)

Additional Local Resources:



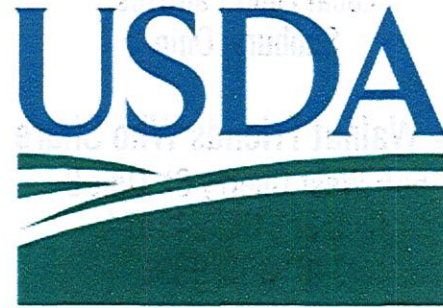
Sunbury Local Library
44 Burr Dr.
Sunbury, Ohio 43074

(740) 965-3901

Monday-Thursday 9am-8pm
Friday- 9am -5pm
Saturday- 9am-5pm
Sunday-Closed



Big Walnut Local School District
110 Tippet Court
Sunbury, Ohio 43074
Phone: 740.965.3010



1-866-348-6479
Monday through Friday,
7 a.m. thru 10 p.m. ET.

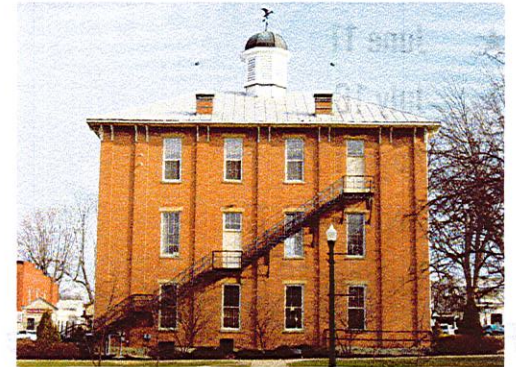
Hunger Free America operates the National Hunger Hotline on behalf of USDA. Staff connects callers with emergency food providers in their community, government assistance programs, and various social services.

Freestanding Pantries in Sunbury/Galena:

- ★ **Sunbury United Methodist Church**
100 West Cherry St. Sunbury 43074
- ★ **Big Walnut Middle School**
777 Cheshire Rd. Sunbury 43074
- ★ **Glass Rooster Cannery**
1673 OH-605 Sunbury 43074
- ★ **Westerville Estates**
11050 Fancher Rd. Westerville 43082

Food Resources in Our Community

By: Lauren Metzger and Erica Staderman



Freestanding pantries and fresh food resources in the Sunbury/Galena area.



THURSDAY

Food Pantries

LSS FOOD PANTRY
Place your order and schedule pick up online at lssfoodpantries.org or call the Help Desk at 1-877-LSS-MEAL. Questions, visit: www.lssnetworkofhope.org/foodpantries/

OPEN TABLE FOOD PANTRY
2393 Peachblow Road, Lewis Center
740-548-7718
Serving zip codes 43065, 43035, 43240
FOURTH THURSDAY
7-8:30PM

THE SALVATION ARMY
89 Chesire Street, Delaware
740-993-0144
Choice Pantry
1PM-4PM

FREE OR REDUCED Community Meals

ANDREWS HOUSE
39 West Winter Street, Delaware
740-369-4520
THIRD THURSDAY
5:30-6:30PM

WINTER STREET DINNER
FIRST PRESBYTERIAN CHURCH
73 West Winter Street, Delaware
740-363-1205
FOURTH THURSDAY
6-7PM

COMMON GROUND FREE STORE
193 East Central Avenue, Delaware
740-369-3733
6PM-8:30PM

55+ MEALS -
Provided by SourcePoint reservations one week in advance & cancellation required by calling 740-203-2433.

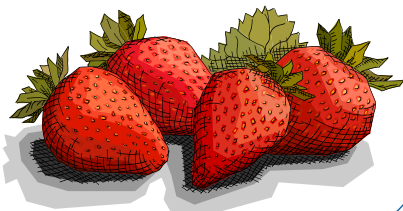
ASHLEY-WHITE LILY CHAPEL
THURSDAYS, 11:30AM-1PM

DELAWARE-GEORGETOWN APARTMENTS
THURSDAYS, 11:30AM-1PM

ST. MICHAEL'S COMMUNITY, 35 LEXINGTON BLVD, DELAWARE
THURSDAYS, 11:30AM-1PM

18 YEARS & YOUNGER

DELAWARE-SUMMER LUNCH AT WOODWARD ELEMENTARY
NOON-1PM

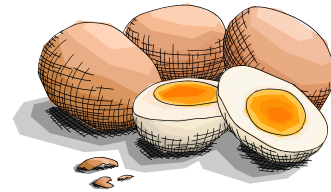


FRIDAY

Food Pantries

BELLE AVENUE FOOD PANTRY
162 Belle Avenue, Delaware
740-369-4943
1-2PM

UNITED WAY RESOURCE CENTER-PACER PANTRY
74 W. William St., Delaware
740-833-1619
CALL FOR AN APPOINTMENT



FREE OR REDUCED Community Meals

ANDREWS HOUSE
39 West Winter Street, Delaware
740-369-4520
SECOND FRIDAY
5:30-6:30PM

COME AND DINE PLEASANT HILL FREWILL BAPTIST CHURCH
230 Hayes Street, Delaware
740-363-5295
THIRD FRIDAY
4-6PM

COMMUNITY OPEN TABLE SUNBURY UNITED METHODIST CHURCH
100 West Cherry Street, Sunbury
740-965-3813
FIRST FRIDAY
5:30PM

PEOPLE IN NEED
138 Johnson Drive, Delaware
740-363-6284
9AM-NOON • 1-3PM

THE SALVATION ARMY
89 Chesire Street, Delaware
740-993-0144
Choice Pantry
1PM-4PM

55+ MEALS -
Provided by SourcePoint reservations one week in advance & cancellation required by calling 740-203-2433.

800 CHESIRE ROAD, DELAWARE
Reservation not necessary
FRIDAYS, 11AM-1:30PM

ASHLEY-WHITE LILY CHAPEL
FRIDAYS, 11:30AM-1PM

ST. MICHAEL'S COMMUNITY, 35 LEXINGTON BLVD, DELAWARE
FRIDAYS, 11:30AM-1PM

18 YEARS & YOUNGER

DELAWARE-SUMMER LUNCH AT WOODWARD ELEMENTARY
NOON-1PM

SATURDAY

Food Pantries

BIG WALNUT FRIENDS WHO SHARE
216 High Street, Sunbury
740-965-9596
Services for senior citizens of Big Walnut School District, bring proof of residency
SECOND SATURDAY
10AM-NOON

FARMERS MARKET SNAP/PRODUCE PERKS
Sandusky Street, Downtown Delaware
740-369-4520
MAY-OCTOBER
9AM-NOON

FREE OR REDUCED Community Meals

COMMON GROUND FREE STORE
193 East Central Avenue, Delaware
740-369-3733
10AM-1PM

M.A.S.H. PANTRY FOR VETERANS
222 East William Street, Delaware
614-522-1555
FIRST & THIRD SATURDAYS (WEATHER PERMITTING)
9AM-NOON

A TABLE PREPARED ZION A.M.E. CHURCH
140 South Washington Street, Delaware
740-363-1810
FOURTH SATURDAY
4-6PM

PARTNERS



DELAWARE COUNTY HUNGER ALLIANCE

Food Pantries & FREE OR REDUCED Community Meals

LOCATIONS & TIMES



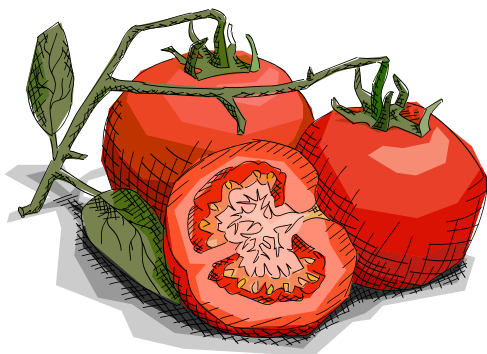
DelawareCountyHunger.org

See web page for latest version. Times and locations are subject to change.
Revised 05/11/2021

HISTORY

Created in 2012 by the United Way of Delaware County and Delaware Public Health District, the Delaware County Hunger Alliance mission is "Fighting to End Hunger." The Alliance is a cross-sector collaboration of community partners committed to connecting our neighbors in need with services that provide access to healthy food options, nutrition education, and resources that promote economic stability.

In 2015, 10 pantries served 11,963 un-duplicated individuals through the Mid-Ohio Foodbank network in Delaware County. According to Feeding America, in 2016, there were 15,890 individuals in Delaware County who were faced with food insecurity on a regular basis. Through the Delaware County Hunger Alliance, our partners use best practices, data and creativity to increase hunger-related services, outreach and opportunity throughout Delaware County.



MONDAY

Food Pantries

DELAWARE MOBILE MARKET
795 Pollock Road, Delaware
740-369-4520
Income guidelines, brief registration, curbside
FIRST & THIRD MONDAYS
10AM-11:30AM

DELAWARE CITY VINEYARD-FEED DELAWARE
32 Troy Road, Delaware
740-362-6383
6-8PM

UNITED WAY RESOURCE CENTER-PACER PANTRY
74 W. William St., Delaware
740-833-1619
CALL FOR AN APPOINTMENT

PEOPLE IN NEED
138 Johnson Drive, Delaware
740-363-6284
9AM-NOON • 1-4:30PM

FREE OR REDUCED Community Meals

ANDREWS HOUSE
39 West Winter Street,
Delaware
740-369-4520
THIRD MONDAY
5:30-6:30PM

COMMON GROUND FREE STORE
193 East Central Avenue,
Delaware
740-369-3733
6-8:30PM

FEED DELAWARE
32 Troy Road, Delaware
740-362-6383
SECOND & FOURTH MONDAYS
6-8PM

VINEYARD CHURCH OF DELAWARE COUNTY
1001 West Cherry Street,
Sunbury
740-965-8888
FIRST & THIRD MONDAYS
4-7PM



THE SALVATION ARMY
89 Chesire Street, Delaware
740-993-0144
Choice Pantry
1PM-4PM

VINEYARD CHURCH OF DELAWARE COUNTY
1001 West Cherry Street,
Sunbury
740-965-8888
FIRST & THIRD MONDAYS
4-7PM

55+ MEALS -

Provided by SourcePoint reservations one week in advance & cancellation required by calling 740-203-2433.

ST. MICHAEL'S COMMUNITY, 35 LEXINGTON BLVD, DELAWARE
MONDAYS, 11:30AM-1PM

800 CHESIRE ROAD, DELAWARE
Reservation not necessary
MONDAYS, 11AM-1:30PM

18 YEARS & YOUNGER

DELAWARE-SUMMER LUNCH AT WOODWARD ELEMENTARY
NOON-1PM

TUESDAY

Food Pantries

BELLE AVENUE FOOD PANTRY
162 Belle Avenue, Delaware
740-369-4943
1-2PM

BIG WALNUT FRIENDS WHO SHARE
216 High Street, Sunbury
740-965-9596
Income below 200% of poverty level, bring proof of residency
SECOND & FOURTH TUESDAYS
6:30-8PM

BUCKEYE VALLEY FOOD PANTRY
101 East High Street, Ashley
614-507-0426
Serving Buckeye Valley residents, bring bags
10AM-NOON

EASTSIDE MISSION FOOD PANTRY
32 Joy Avenue, Delaware
740-816-8826
SECOND & FOURTH TUESDAYS
5:30-7PM



FREE OR REDUCED Community Meals

COMMON GROUND FREE STORE
193 East Central Avenue,
Delaware
740-369-3733
6-8:30PM

OUTREACH CHRISTIAN CENTER
77 London Road, Bldg B,
Delaware
FOURTH TUESDAY
5-7PM

GRACE POINT COMMUNITY CHURCH
2393 Peachblow road, Delaware
SECOND TUESDAY
SERVING ZIP CODES 43035, 43065, 43240
6:30PM

KILBOURNE UMC FOOD PANTRY
5591 State Route 521, Kilbourne
740-524-6041
10AM-4PM EXCEPT ELECTION DAYS

LSS FOOD PANTRY
Place your order and schedule pick up online at lssfoodpantries.org or call the Help Desk at 1-877-LSS-MEAL. Questions, visit: www.lssnetworkofhope.org/foodpantries/

OPEN TABLE FOOD PANTRY
2393 Peachblow Road, Lewis Center
740-548-7718
Serving zip codes 43065, 43035, 43240
SECOND TUESDAY
7-8:30PM

55+ MEALS -

Provided by SourcePoint reservations one week in advance & cancellation required by calling 740-203-2433.

DELAWARE-GEORGETOWN APARTMENTS
TUESDAYS, 11:30AM-1PM

ST. MICHAEL'S COMMUNITY, 35 LEXINGTON BLVD, DELAWARE
TUESDAYS, 11:30AM-1PM

18 YEARS & YOUNGER

DELAWARE-SUMMER LUNCH AT WOODWARD ELEMENTARY
NOON-1PM

WEDNESDAY

Food Pantries

BIG WALNUT FRIENDS WHO SHARE
216 High Street, Sunbury
740-965-9596
Income below 200% of poverty level, bring proof of residency
9-11:30AM

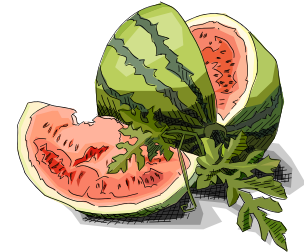
UNITED WAY RESOURCE CENTER-PACER PANTRY
74 W. William St., Delaware
740-833-1619
CALL FOR AN APPOINTMENT

FARMERS MARKET SNAP/PRODUCE PERKS
Sandusky Street,
Downtown Delaware
740-369-4520
MAY-OCTOBER
3-6PM

FOOD FOR FRIENDS
28 W William St, Delaware
740-363-4741
5-6PM

HIGHPOINT COMMUNITY OUTREACH
795 Pollock Road, Delaware
740-363-1754
THIRD WEDNESDAY
5-6:30PM

PEOPLE IN NEED
138 Johnson Drive, Delaware
740-363-6284
9AM-NOON • 1-4:30PM



FREE OR REDUCED Community Meals

WILLIAM STREET UNITED METHODIST CHURCH
28 West William Street,
Delaware
740-363-4741
FIRST WEDNESDAY
5-6:30PM

COMMON GROUND FREE STORE
193 East Central Avenue,
Delaware
740-369-3733
10AM-1PM

HIGHPOINT COMMUNITY OUTREACH
795 Pollock Road, Delaware
740-363-1754
THIRD WEDNESDAY
5-6:30PM

55+ MEALS -

Provided by SourcePoint reservations one week in advance & cancellation required by calling 740-203-2433.

DELAWARE-ST. MICHAEL'S COMMUNITY
WEDNESDAYS, 11:30AM-1PM

18 YEARS & YOUNGER

DELAWARE-SUMMER LUNCH AT WOODWARD ELEMENTARY
NOON-1PM